

REFERENCE : 124

APPARTEMENT/APARTMENT

Surface area : 66 sqm

Surface area : 66 sqm

Floor : 7ème

7th Floor

Nearby from the palais by walk : 2 min

Nearby from the palais by walk : 2 min

Vacation rentals and congresses

Vacation rentals and congresses

IMMEUBLE / BUILDING

High standing building

High standing building



Cannes city center, located in the Gray d'Albion, apartment of 66 sqm, enjoying a magnificent sea view, consists of a lounge dining room with access to a terrace of about 20 sqm, kitchen, one bedroom, one bathroom.

Cannes city center, located in the Gray d'Albion, apartment of 66 sqm, enjoying a magnificent sea view, consists of a lounge dining room with access to a terrace of about 20 sqm, kitchen, one bedroom, one bathroom.

PRESTATIONS / SERVICES

Bedrooms / *Bedrooms* : 1

Double beds / *Double beds* : 1

Sofa-bed / *Sofa-bed* : 1

Baths / *Baths* : 1

WC / *WC* : 1

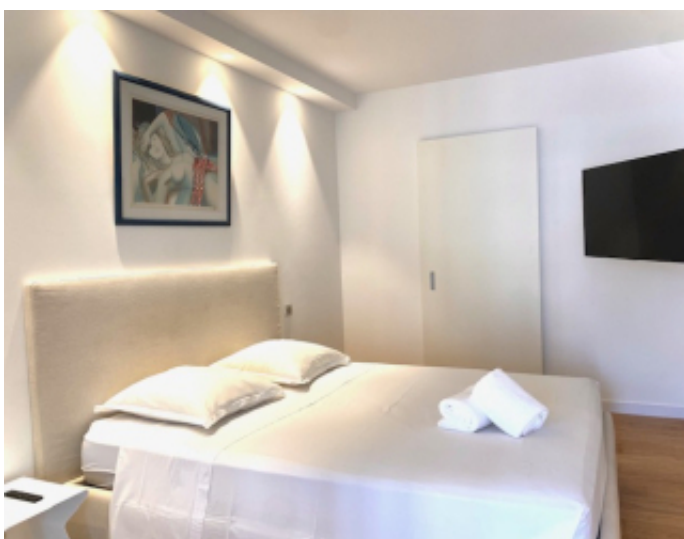
Terrace / *Terrace* : 20 sqm

Internet acces / *Internet acces*

Air conditioning / *Air conditioning*

Sea view / *Sea view*

Lift / *Lift*





CHAUVET
Luxury Properties

location - transaction - conciergerie - expertise



Chauvet Luxury Properties
Résidence le capricorne - 10 bis rue d'Ormesson - 06110 Le Cannet
contact@chauvetluxuryproperties.com - +33 6 16 57 62 14

SAS au capital de 1 000€ - SIRET 987 627 742 00016 - Code Naf : 55.20Z - N TVA Intracommunautaire FR02 987 627 742



CHAUVET
Luxury Properties

location - transaction - conciergerie - expertise

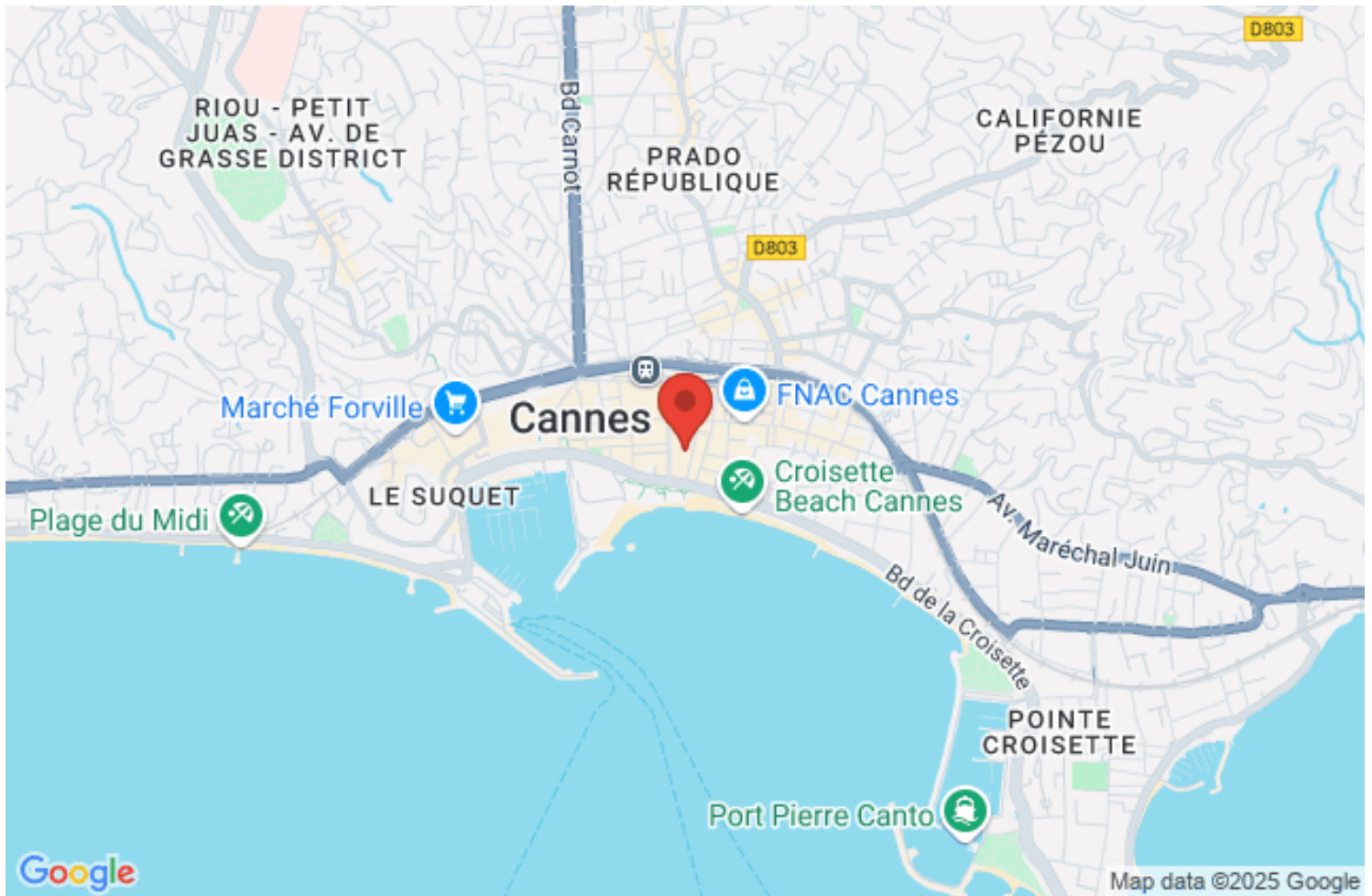


Chauvet Luxury Properties

Résidence le capricorne - 10 bis rue d'Ormesson - 06110 Le Cannet

contact@chauvetluxuryproperties.com - +33 6 16 57 62 14

SAS au capital de 1 000€ - SIRET 987 627 742 00016 - Code Naf : 55.20Z - N TVA Intracommunautaire FR02 987 627 742



Chauvet Luxury Properties

Résidence le capricorne - 10 bis rue d'Ormesson - 06110 Le Cannet

contact@chauvetluxuryproperties.com - +33 6 16 57 62 14

SAS au capital de 1 000€ - SIRET 987 627 742 00016 - Code Naf : 55.20Z - N TVA Intracommunautaire FR02 987 627 742