

REFERENCE : 601

APPARTEMENT/APARTMENT

Surface area : 300 sqm

Surface area : 300 sqm

Floor : Ground floor

Floor : Ground floor

Nearby from the palais by walk : 5 min

Nearby from the palais by walk : 5 min

Vacation rentals and congresses

Vacation rentals and congresses

IMMEUBLE / BUILDING

Renovated bourgeois building

Renovated bourgeois building



Cannes center, town house of about 300 sqm on 3 levels, 1st level: garden, living room, fully equipped independent kitchen, rear terrace, 2nd level: 2 bedrooms, 2 shower rooms with wc, independent TV lounge with 2 beds simple 3rd level: 3 bedrooms, 3 shower rooms with wc.

Cannes center, town house of about 300 sqm on 3 levels, 1st level: garden, living room, fully equipped independent kitchen, rear terrace, 2nd level: 2 bedrooms, 2 shower rooms with wc, independent TV lounge with 2 beds simple 3rd level: 3 bedrooms, 3 shower rooms with wc.

PRESTATIONS / SERVICES

Bedrooms / *Bedrooms* : 6

Double beds / *Double beds* : 2

Single Beds / *Single Beds* : 8

Showers / *Showers* : 5

Baths / *Baths* : 1

WC / *WC* : 5

Terrace / *Terrace* : 30 sqm

Internet acces / *Internet acces*

Air conditioning / *Air conditioning*



CHAUVET
Luxury Properties

location - transaction - conciergerie - expertise



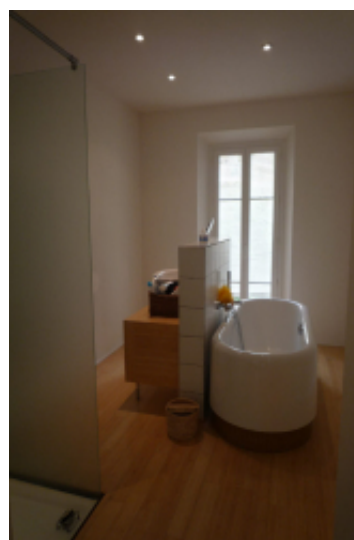
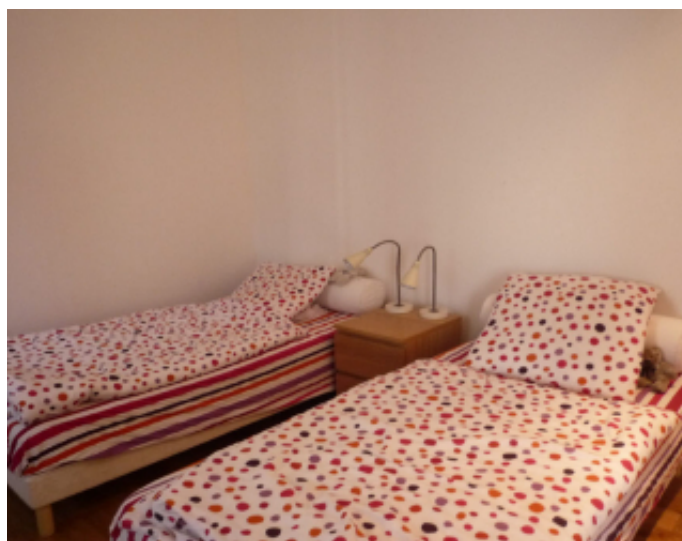
Chauvet Luxury Properties
Résidence le capricorne - 10 bis rue d'Ormesson - 06110 Le Cannet
contact@chauvetluxuryproperties.com - +33 6 16 57 62 14

SAS au capital de 1 000€ - SIRET 987 627 742 00016 - Code Naf : 55.20Z - N TVA Intracommunautaire FR02 987 627 742



CHAUVET
Luxury Properties

location - transaction - conciergerie - expertise



Chauvet Luxury Properties

Résidence le capricorne - 10 bis rue d'Ormesson - 06110 Le Cannet

contact@chauvetluxuryproperties.com - +33 6 16 57 62 14

SAS au capital de 1 000€ - SIRET 987 627 742 00016 - Code Naf : 55.20Z - N TVA Intracommunautaire FR02 987 627 742



Chauvet Luxury Properties

Résidence le capricorne - 10 bis rue d'Ormesson - 06110 Le Cannet

contact@chauvetluxuryproperties.com - +33 6 16 57 62 14

SAS au capital de 1 000€ - SIRET 987 627 742 00016 - Code Naf : 55.20Z - N TVA Intracommunautaire FR02 987 627 742