

**REFERENCE : 300-1**

**APPARTEMENT/APARTMENT**

Surface area : 225 sqm

*Surface area : 225 sqm*

Floor : Ground floor

*Floor : Ground floor*

Nearby from the palais by car : 8  
min

*Nearby from the palais by car : 8  
min*

*Vacation rentals and congresses*

*Vacation rentals and congresses*

**IMMEUBLE / BUILDING**

Florentine villa

*Florentine villa*



Cannes, low californie, beautiful villa of 225m2. On 2 levels, large entrance hall with cloakroom and guest WC, large living dining room to the garden and pool, cooked equipped office with sofa bed, shower room with steam bath and WC. Upstairs, 3 bedrooms with en suite shower and toilet and bath for the master bedroom, terrace.

*Cannes, low californie, beautiful villa of 225m2. On 2 levels, large entrance hall with cloakroom and guest WC, large living dining room to the garden and pool, cooked equipped office with sofa bed, shower room with steam bath and WC. Upstairs, 3 bedrooms with en suite shower and toilet and bath for the master bedroom, terrace.*

**PRESTATIONS / SERVICES**

Bedrooms / *Bedrooms* : 3

Double beds / *Double beds* : 2

Single Beds / *Single Beds* : 2

Sofa-bed / *Sofa-bed* : 1

Showers / *Showers* : 3

Baths / *Baths* : 1

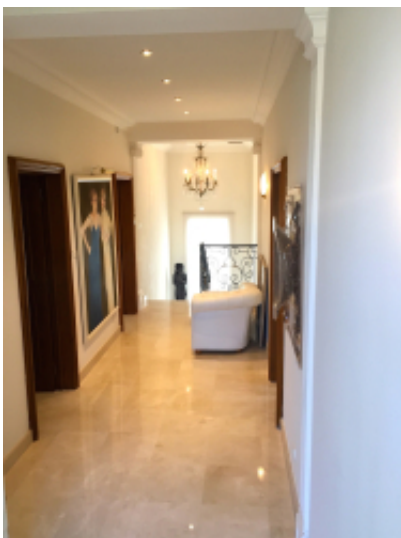
WC / *WC* : 5

Ground Size / *Ground Size* : 1400 sqm



CHAUVET  
Luxury Properties

location - transaction - conciergerie - expertise



Chauvet Luxury Properties  
Résidence le capricorne - 10 bis rue d'Ormesson - 06110 Le Cannet  
contact@chauvetluxuryproperties.com - +33 6 16 57 62 14

SAS au capital de 1 000€ - SIRET 987 627 742 00016 - Code Naf : 55.20Z - N TVA Intracommunautaire FR02 987 627 742



CHAUVET  
Luxury Properties

location - transaction - conciergerie - expertise



Chauvet Luxury Properties  
Résidence le capricorne - 10 bis rue d'Ormesson - 06110 Le Cannet  
contact@chauvetluxuryproperties.com - +33 6 16 57 62 14

SAS au capital de 1 000€ - SIRET 987 627 742 00016 - Code Naf : 55.20Z - N TVA Intracommunautaire FR02 987 627 742





CHAUVET  
Luxury Properties

location - transaction - conciergerie - expertise



Chauvet Luxury Properties

Résidence le capricorne - 10 bis rue d'Ormesson - 06110 Le Cannet

[contact@chauvetluxuryproperties.com](mailto:contact@chauvetluxuryproperties.com) - +33 6 16 57 62 14

SAS au capital de 1 000€ - SIRET 987 627 742 00016 - Code Naf : 55.20Z - N TVA Intracommunautaire FR02 987 627 742



Chauvet Luxury Properties

Résidence le capricorne - 10 bis rue d'Ormesson - 06110 Le Cannet

[contact@chauvetluxuryproperties.com](mailto:contact@chauvetluxuryproperties.com) - +33 6 16 57 62 14

SAS au capital de 1 000€ - SIRET 987 627 742 00016 - Code Naf : 55.20Z - N TVA Intracommunautaire FR02 987 627 742