

REFERENCE : 234

**APPARTEMENT/APARTMENT**

Surface area : 1 sqm

*Surface area : 1 sqm*

Floor : 7ème

*7th Floor*

Nearby from the palais by walk : 6 min

*Nearby from the palais by walk : 6 min*

*Vacation rentals and congresses*

*Vacation rentals and congresses*

**IMMEUBLE / BUILDING**

High standing building

*High standing building*



Cannes, Croisette, superb completely renovated penthouse apartment composed of an entrance hall, a living room opening onto a corner terrace with sea view, and jacuzzi, a fully equipped kitchen, two en-suite bedrooms with bathroom/or showers, a guest toilet.

*Cannes, Croisette, superb completely renovated penthouse apartment composed of an entrance hall, a living room opening onto a corner terrace with sea view, and jacuzzi, a fully equipped kitchen, two en-suite bedrooms with bathroom/or showers, a guest toilet.*

**PRESTATIONS / SERVICES**

Bedrooms / *Bedrooms* : 2

Double beds / *Double beds* : 2

Showers / *Showers* : 1

Baths / *Baths* : 1

WC / *WC* : 2

Internet acces / *Internet acces*

Air conditioning / *Air conditioning*

Sea view / *Sea view*

Lift / *Lift*

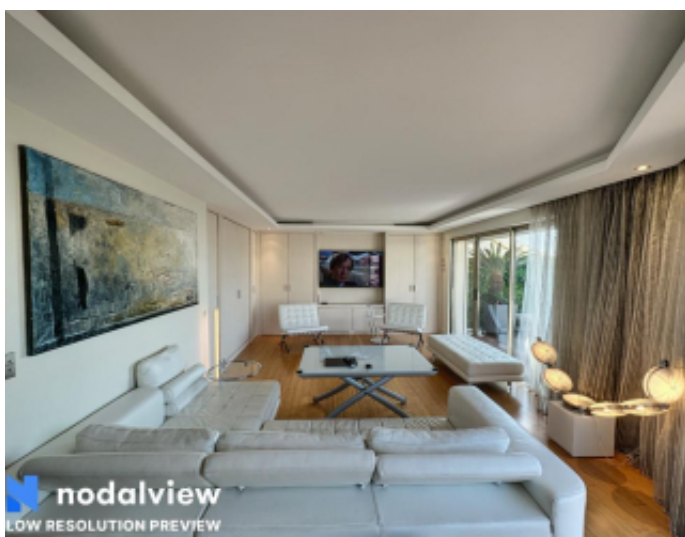
Jacuzzi / *Jacuzzi*

Chauvet Luxury Properties

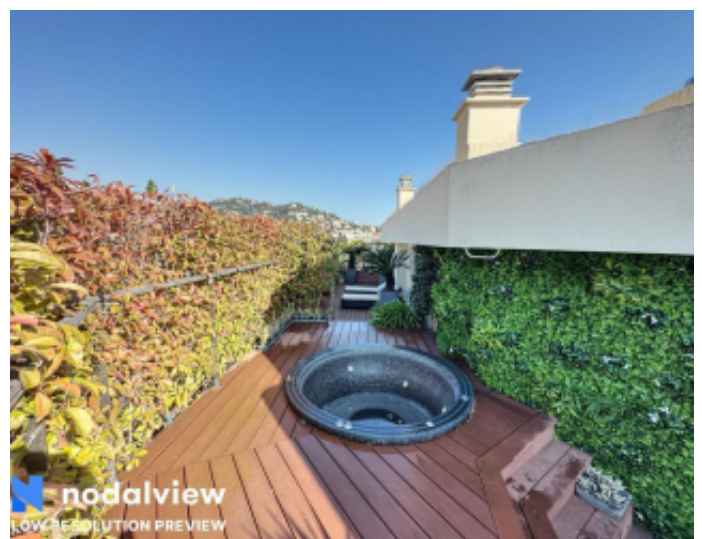
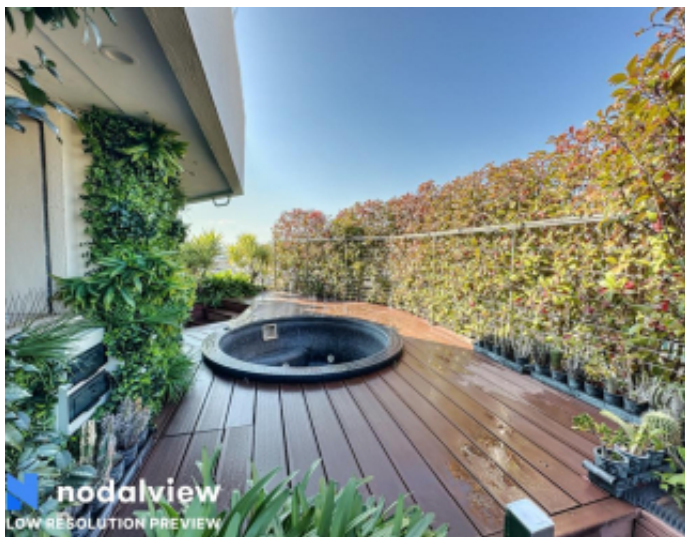
Résidence le capricorne - 10 bis rue d'Ormesson - 06110 Le Cannet

contact@chauvetluxuryproperties.com - +33 6 16 57 62 14

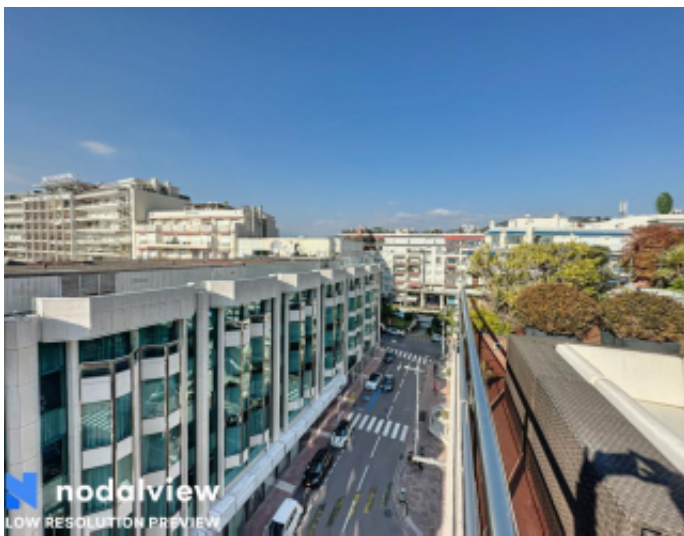
SAS au capital de 1 000€ - SIRET 987 627 742 00016 - Code Naf : 55.20Z - N TVA Intracommunautaire FR02 987 627 742



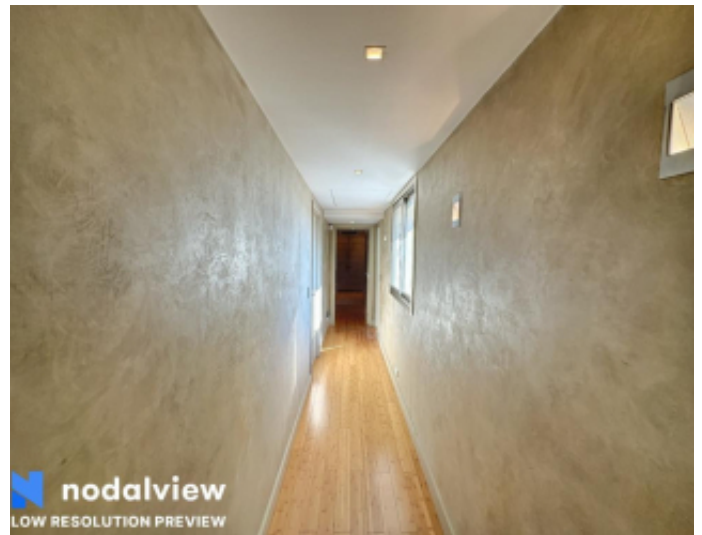


















CHAUVET  
Luxury Properties

location - transaction - conciergerie - expertise



Chauvet Luxury Properties  
Résidence le capricorne - 10 bis rue d'Ormesson - 06110 Le Cannet  
[contact@chauvetluxuryproperties.com](mailto:contact@chauvetluxuryproperties.com) - +33 6 16 57 62 14

SAS au capital de 1 000€ - SIRET 987 627 742 00016 - Code Naf : 55.20Z - N TVA Intracommunautaire FR02 987 627 742



