

REFERENCE : 292

PENTHOUSE

Surface area : 100 sqm

Surface area : 100 sqm

Floor : 5ème

5th Floor

Nearby from the palais by walk : 10 min

Nearby from the palais by walk : 10 min

Vacation rentals and congresses

Vacation rentals and congresses

High standing building

High standing building



Cannes, Croisette, magnificent penthouse of around 100 sqm, comprising a large living room with open fully equipped kitchen on a terrace of around 50 sqm with panoramic sea view, a guest toilet, 2 bedrooms, 2 bathrooms with wc. Possibility to rent the apartment with the reference 361 which communicate by the terrace.

Cannes, Croisette, magnificent penthouse of around 100 sqm, comprising a large living room with open fully equipped kitchen on a terrace of around 50 sqm with panoramic sea view, a guest toilet, 2 bedrooms, 2 bathrooms with wc. Possibility to rent the apartment with the reference 361 which communicate by the terrace.

PRESTATIONS / SERVICES

Bedrooms / *Bedrooms* : 2

WC / *WC* : 3

Terrace / *Terrace* : 50 sqm

Internet acces / *Internet acces*

Air conditioning / *Air conditioning*

Lift / *Lift*

Panoramic sea view / *Panoramic sea view*



CHAUVET
Luxury Properties

location - transaction - conciergerie - expertise



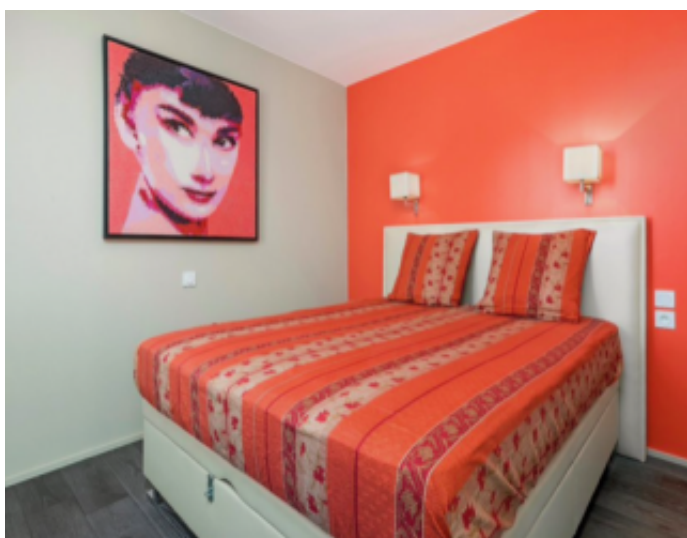
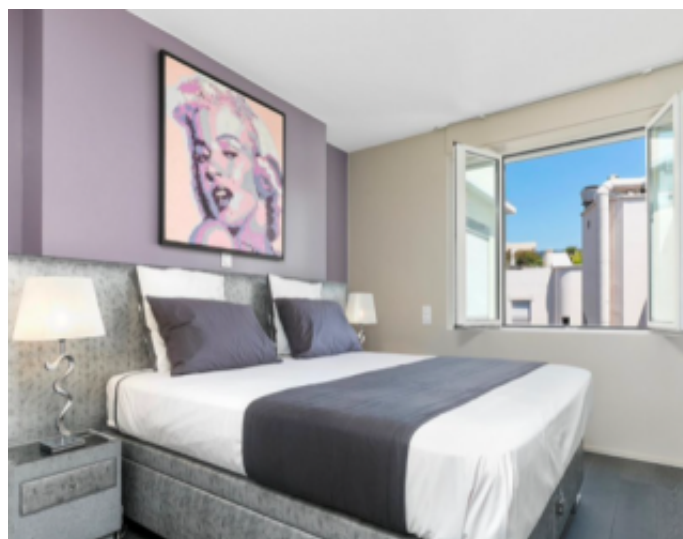
Chauvet Luxury Properties
Résidence le capricorne - 10 bis rue d'Ormesson - 06110 Le Cannet
contact@chauvetluxuryproperties.com - +33 6 16 57 62 14

SAS au capital de 1 000€ - SIRET 987 627 742 00016 - Code Naf : 55.20Z - N TVA Intracommunautaire FR02 987 627 742



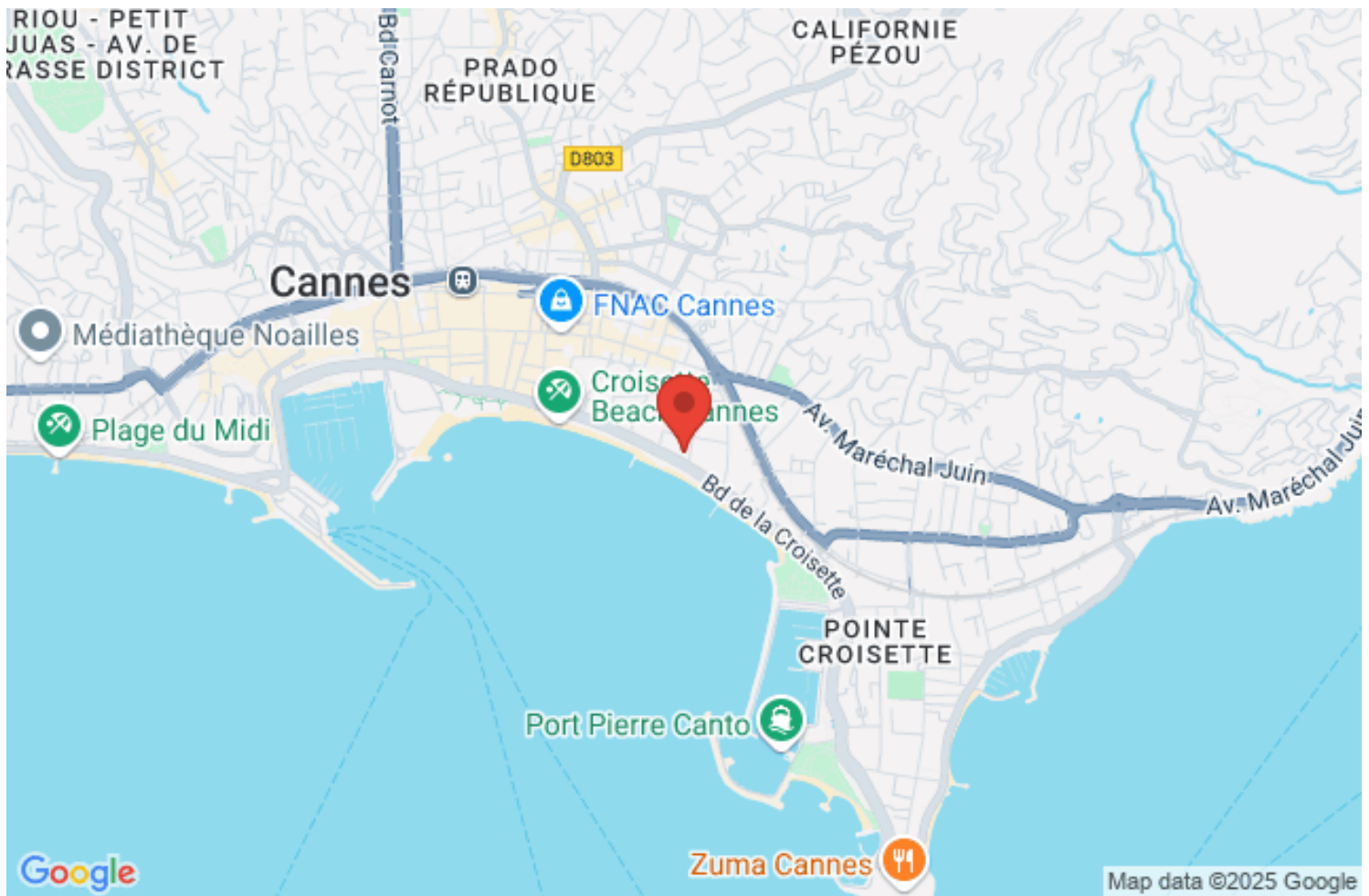
CHAUVET
Luxury Properties

location - transaction - conciergerie - expertise



Chauvet Luxury Properties
Résidence le capricorne - 10 bis rue d'Ormesson - 06110 Le Cannet
contact@chauvetluxuryproperties.com - +33 6 16 57 62 14

SAS au capital de 1 000€ - SIRET 987 627 742 00016 - Code Naf : 55.20Z - N TVA Intracommunautaire FR02 987 627 742



Chauvet Luxury Properties

Résidence le capricorne - 10 bis rue d'Ormesson - 06110 Le Cannet

contact@chauvetluxuryproperties.com - +33 6 16 57 62 14

SAS au capital de 1 000€ - SIRET 987 627 742 00016 - Code Naf : 55.20Z - N TVA Intracommunautaire FR02 987 627 742