

**REFERENCE : 345**

**APPARTEMENT/APARTMENT**

Surface area : 130 sqm

*Surface area : 130 sqm*

Floor : 3ème

*3rd Floor*

Nearby from the palais by walk : 1 min

*Nearby from the palais by walk : 1 min*

*Vacation rentals and congresses*

*Vacation rentals and congresses*

**IMMEUBLE / BUILDING**

Bourgeois building

*Bourgeois building*



Cannes, facing the Palais, wonderful location, beautiful renovated apartment of about 130 sqm, counted an entrance hall, a large living room with fully equipped kitchen on terrace of about 25 sqm enjoying a superb sea view and the harbor, a master bedroom en suite, 2 bedrooms, 2 shower rooms.

*Cannes, facing the Palais, wonderful location, beautiful renovated apartment of about 130 sqm, counted an entrance hall, a large living room with fully equipped kitchen on terrace of about 25 sqm enjoying a superb sea view and the harbor, a master bedroom en suite, 2 bedrooms, 2 shower rooms.*

**PRESTATIONS / SERVICES**

Bedrooms / *Bedrooms* : 3

Single Beds / *Single Beds* : 6

Showers / *Showers* : 2

Baths / *Baths* : 1

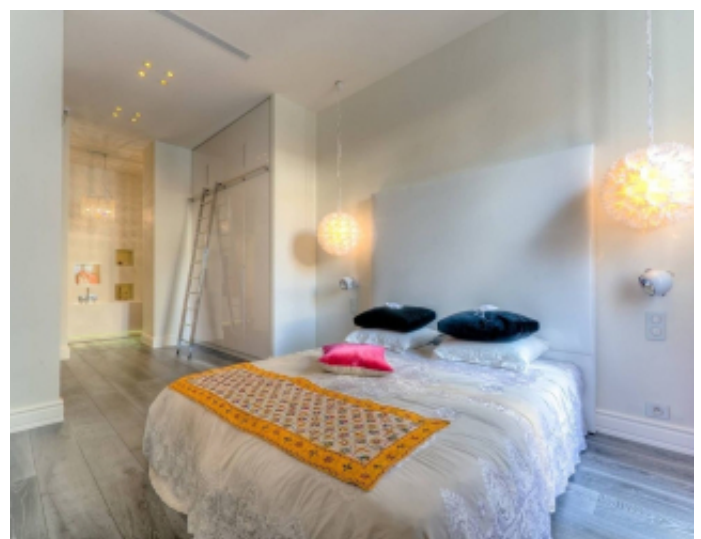
WC / *WC* : 3

Terrace / *Terrace* : 25 sqm

Internet acces / *Internet acces*

Air conditioning / *Air conditioning*

Sea view / *Sea view*

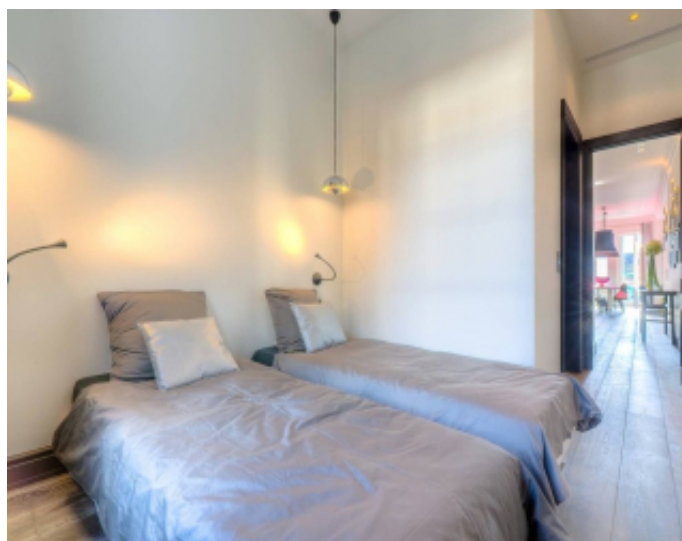
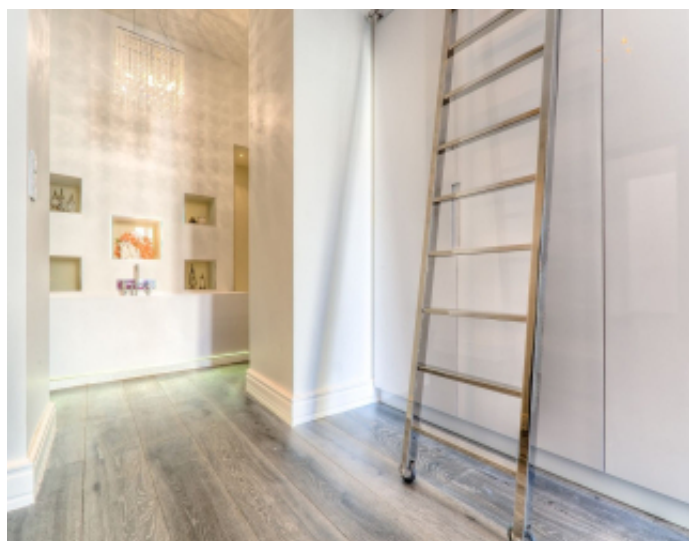






CHAUVET  
Luxury Properties

location - transaction - conciergerie - expertise

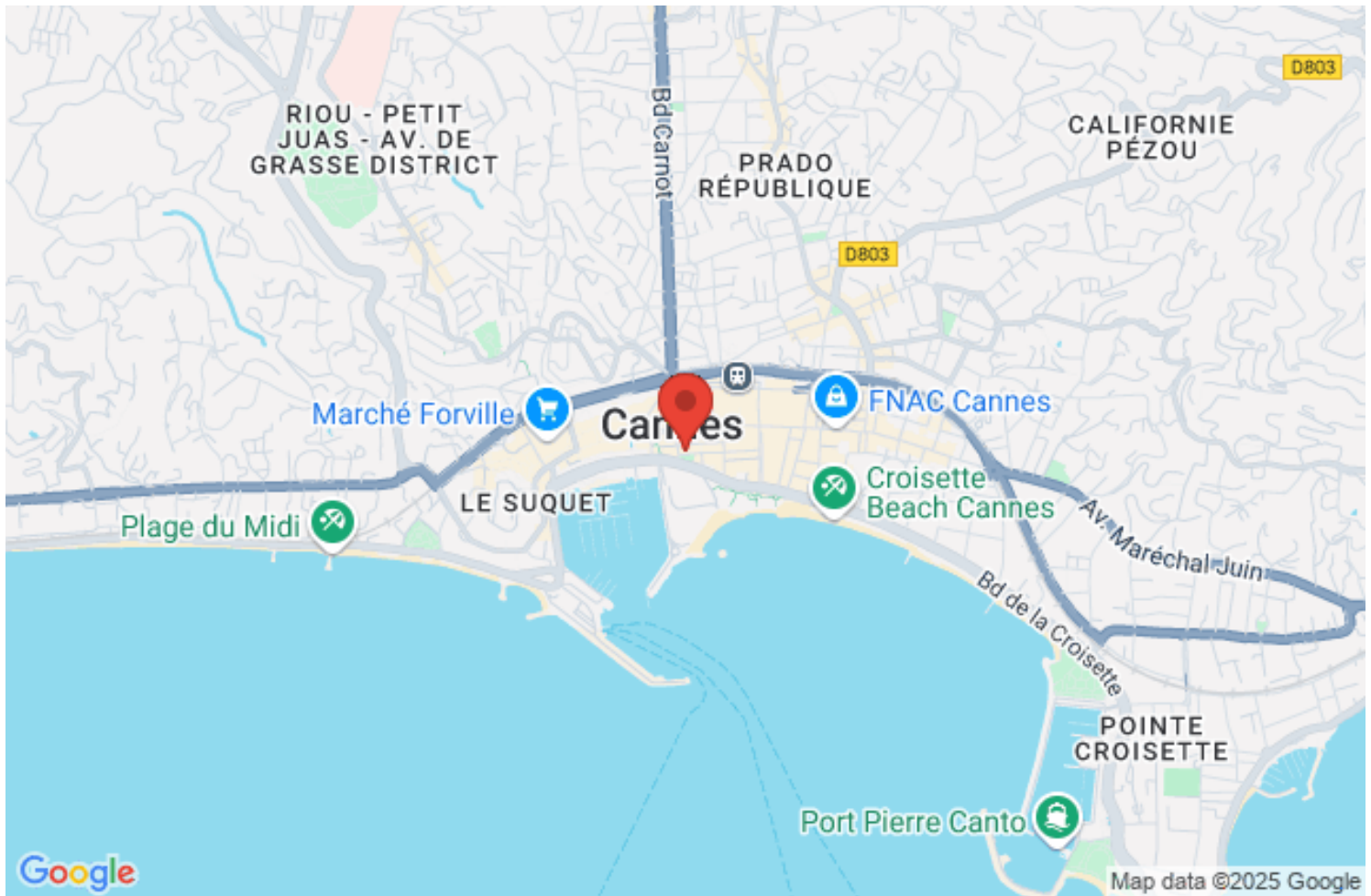


Chauvet Luxury Properties

Résidence le capricorne - 10 bis rue d'Ormesson - 06110 Le Cannet

[contact@chauvetluxuryproperties.com](mailto:contact@chauvetluxuryproperties.com) - +33 6 16 57 62 14

SAS au capital de 1 000€ - SIRET 987 627 742 00016 - Code Naf : 55.20Z - N TVA Intracommunautaire FR02 987 627 742



Chauvet Luxury Properties

Résidence le capricorne - 10 bis rue d'Ormesson - 06110 Le Cannet

[contact@chauvetluxuryproperties.com](mailto:contact@chauvetluxuryproperties.com) - +33 6 16 57 62 14

SAS au capital de 1 000€ - SIRET 987 627 742 00016 - Code Naf : 55.20Z - N TVA Intracommunautaire FR02 987 627 742