

REFERENCE : 342

APPARTEMENT/APARTMENT

Surface area : 160 sqm

Surface area : 160 sqm

Floor : 1er

1st Floor

Nearby from the palais by car : 5
min

*Nearby from the palais by car : 5
min*

Vacation rentals and congresses

Vacation rentals and congresses

IMMEUBLE / BUILDING

High standing building

High standing building



Cannes Croisette, in a prestigious residence, apartment on the ground floor of approximately 160 sqm and 110 sqm terrace, consisting of a large living room with dining room, fully equipped kitchen, 3 bedrooms with en suite baths or showers.

Cannes Croisette, in a prestigious residence, apartment on the ground floor of approximately 160 sqm and 110 sqm terrace, consisting of a large living room with dining room, fully equipped kitchen, 3 bedrooms with en suite baths or showers.

PRESTATIONS / SERVICES

Bedrooms / *Bedrooms* : 3

Double beds / *Double beds* : 3

Showers / *Showers* : 2

Baths / *Baths* : 1

WC / *WC* : 4

Terrace / *Terrace* : 110 sqm

Internet acces / *Internet acces*

Air conditioning / *Air conditioning*

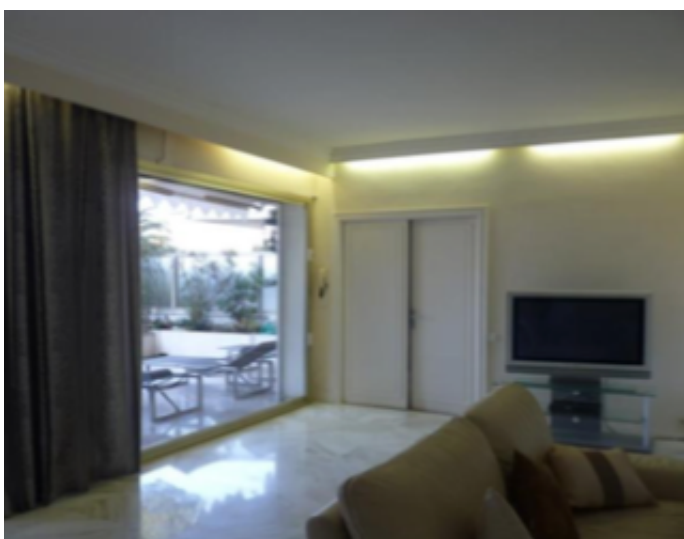
Sea view / *Sea view*

Parking / *Parking* : 1



CHAUVET
Luxury Properties

location - transaction - conciergerie - expertise



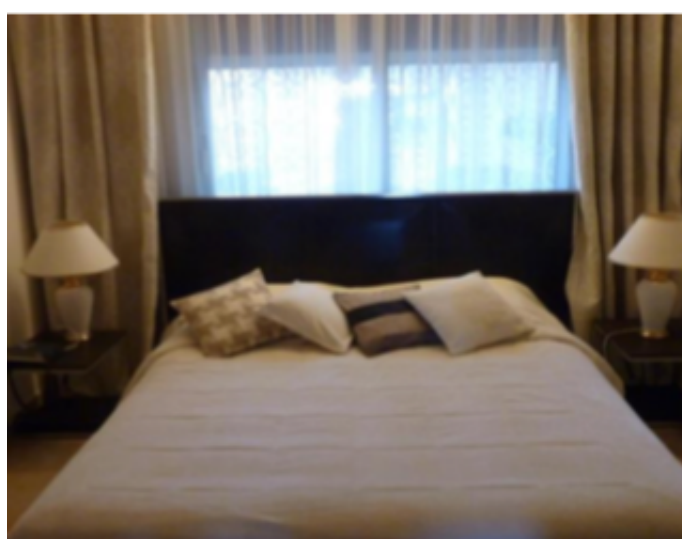
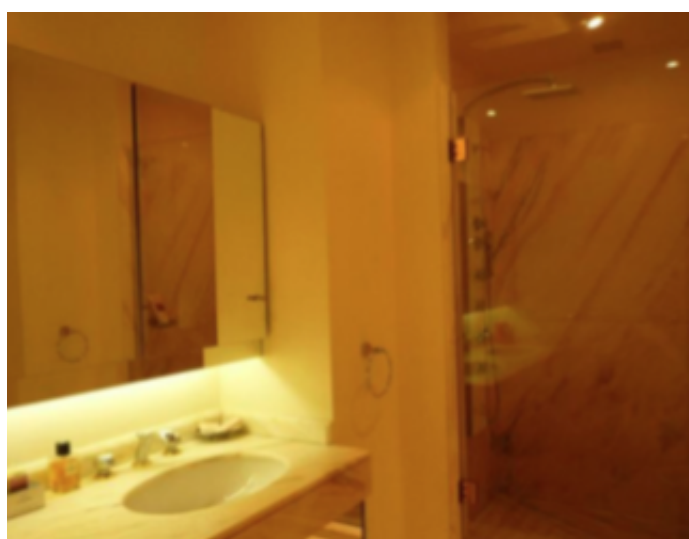
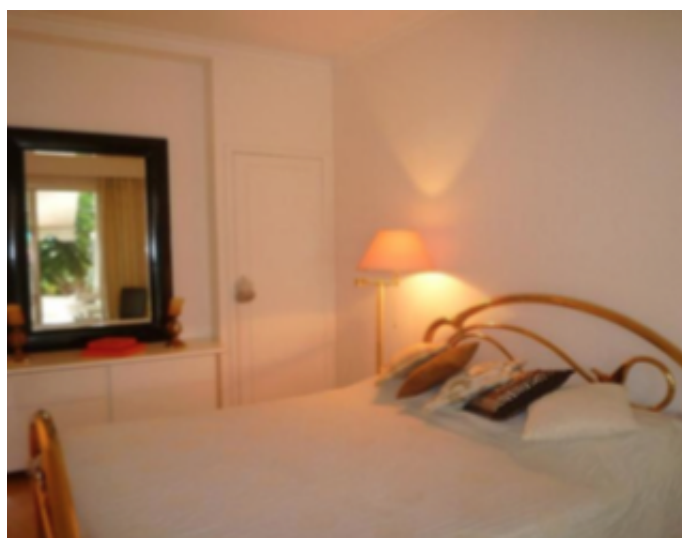
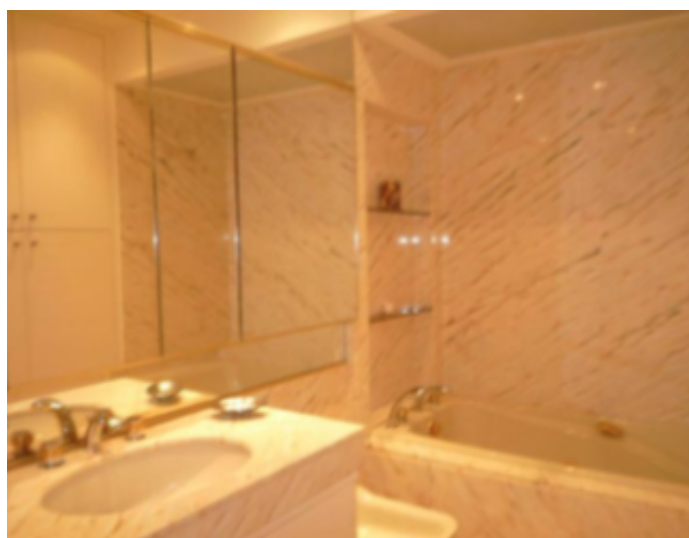
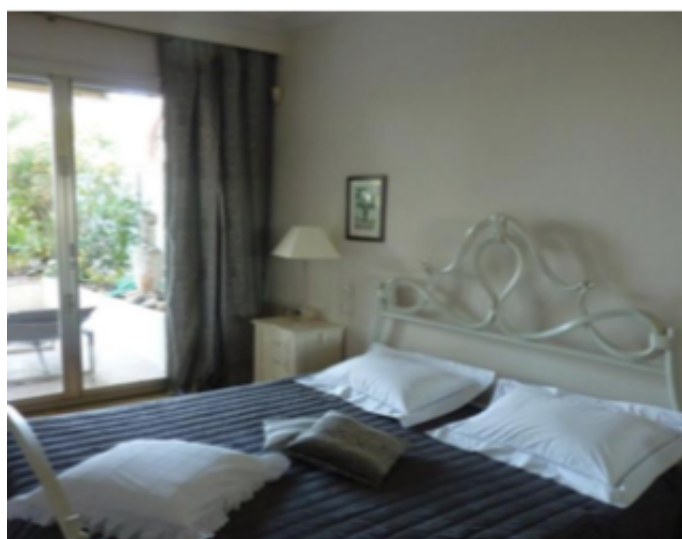
Chauvet Luxury Properties
Résidence le capricorne - 10 bis rue d'Ormesson - 06110 Le Cannet
contact@chauvetluxuryproperties.com - +33 6 16 57 62 14

SAS au capital de 1 000€ - SIRET 987 627 742 00016 - Code Naf : 55.20Z - N TVA Intracommunautaire FR02 987 627 742



CHAUVET
Luxury Properties

location - transaction - conciergerie - expertise



Chauvet Luxury Properties
Résidence le capricorne - 10 bis rue d'Ormesson - 06110 Le Cannet
contact@chauvetluxuryproperties.com - +33 6 16 57 62 14

SAS au capital de 1 000€ - SIRET 987 627 742 00016 - Code Naf : 55.20Z - N TVA Intracommunautaire FR02 987 627 742



CHAUVET
Luxury Properties

location - transaction - conciergerie - expertise



Chauvet Luxury Properties
Résidence le capricorne - 10 bis rue d'Ormesson - 06110 Le Cannet
contact@chauvetluxuryproperties.com - +33 6 16 57 62 14

SAS au capital de 1 000€ - SIRET 987 627 742 00016 - Code Naf : 55.20Z - N TVA Intracommunautaire FR02 987 627 742

